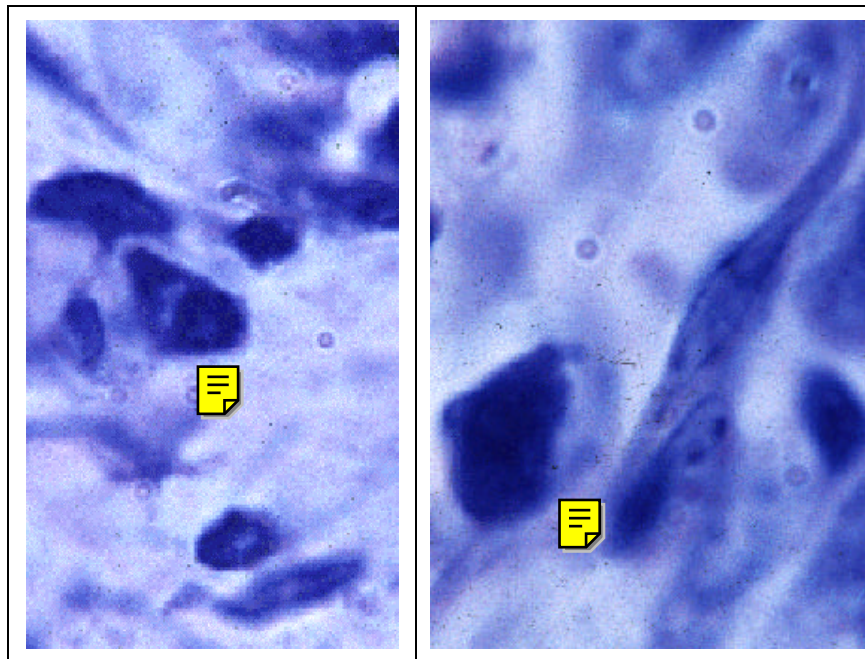


The Inflammatory Response

10 days post infection: Convalescence II

In addition to macrophages, other cells participate in the convalescence process. In the first panel, a plasma cell is denoted by its teardrop shape and clear area adjacent to the nucleus. This cell was making antibody to assist in the clearance of residual bacteria. The second panel shows some oval-shaped fibroblasts that are responsible for laying down new connective tissue leading to scar formation.



[Previous](#)

[Main](#)

[Next](#)

Page

Page

Page