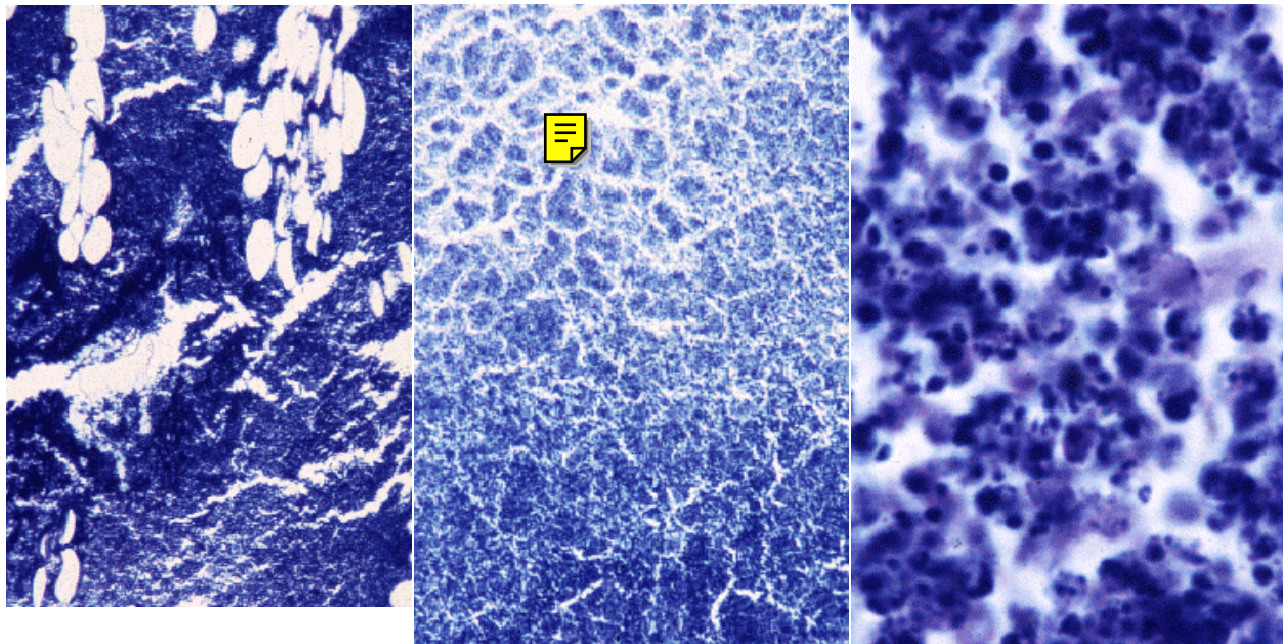


The Inflammatory Response

18 to 36 post infection:

After 2 days, there is a huge PMN infiltrate and the connective tissue is breaking down. We see the formation of a pus pocket where the connective tissue is gone, the fat cells are floating loosely, and there is a mixture of living and dead PMNs. The PMNs release digestive enzymes that break down both bacteria and self-tissues. These three pictures are from the same area at increasing magnification.



Previous	Main	Next
Page	Page	Page