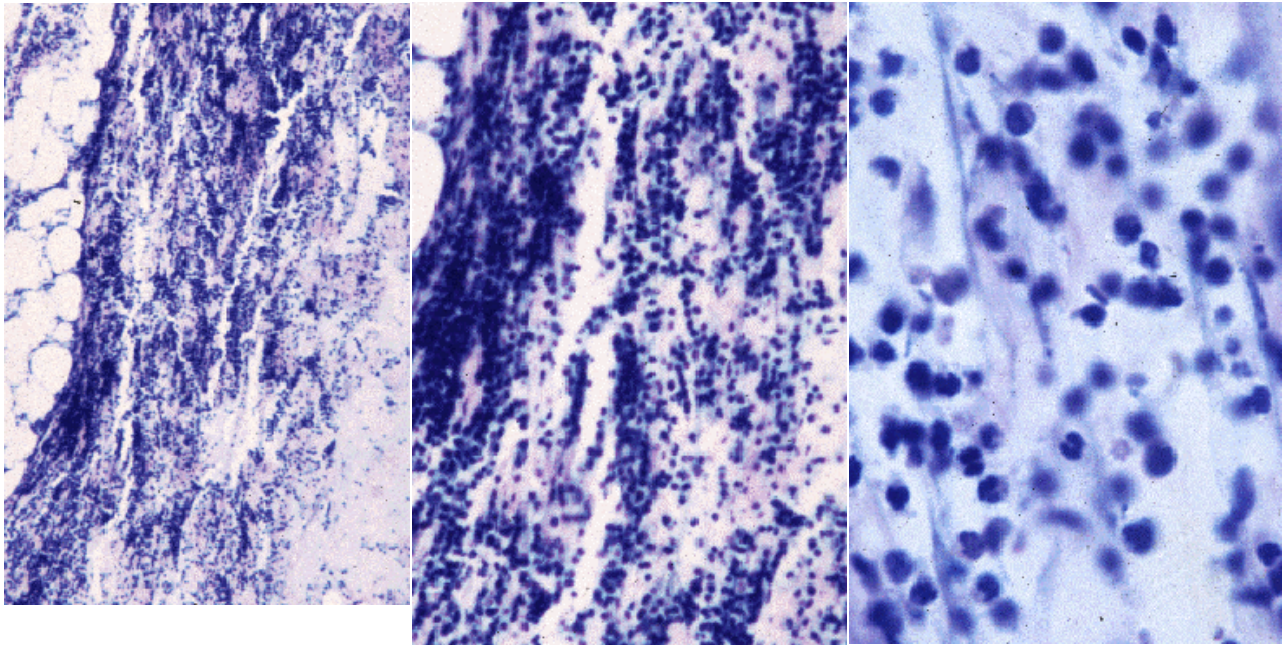


The Inflammatory Response

Six hours post infection:

After 6 hours, there is a huge PMN infiltrate and the connective tissue is breaking down. We see the formation of a pus pocket where the connective tissue is gone, the fat cells are floating loosely, and there is a mixture of living and dead PMNs. The PMNs release digestive enzymes which break down both bacteria and self tissues. These three pictures are from the same area at increasing magnification.



Previous	Main	Next
Page	Page	Page